

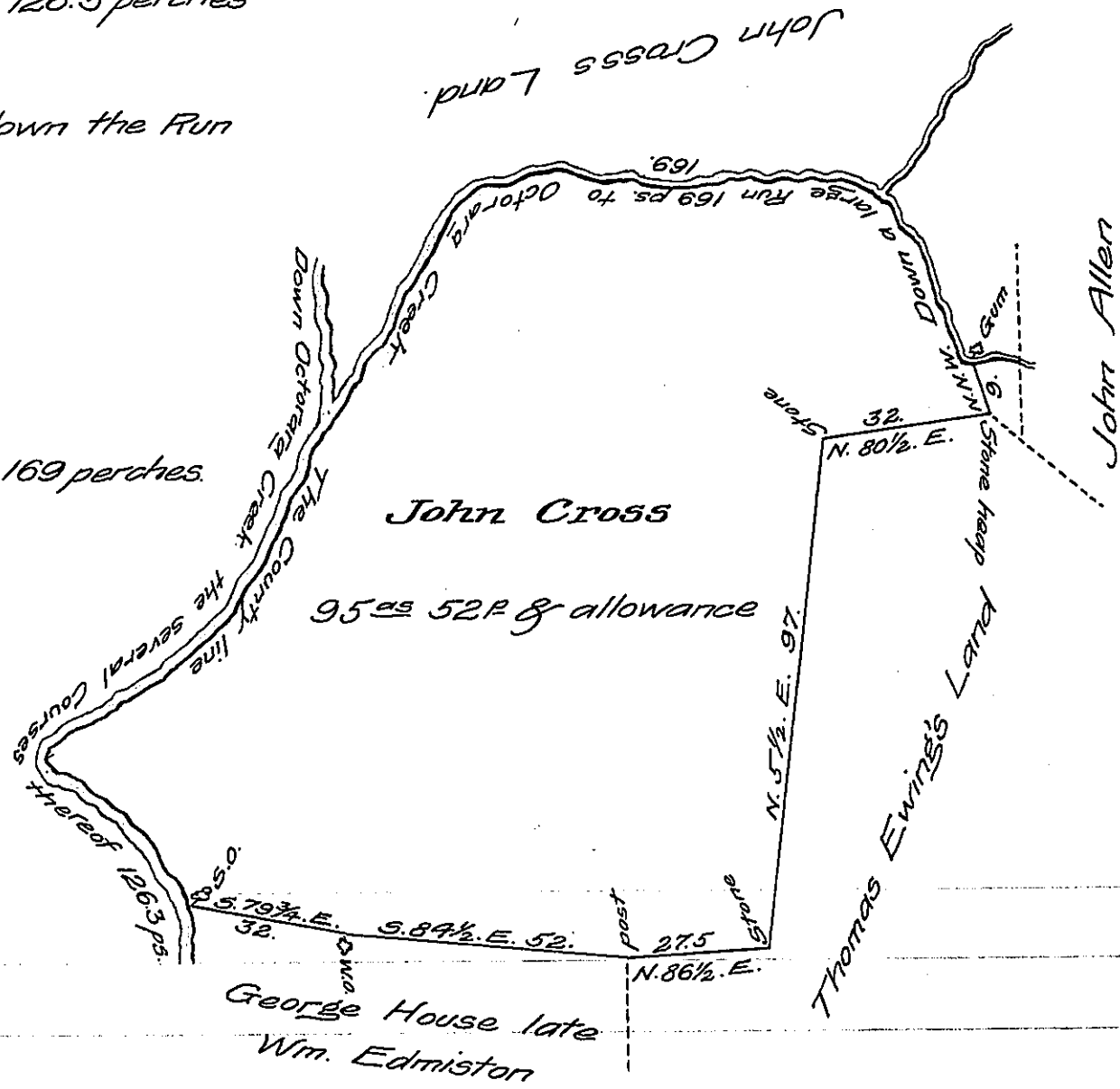
FORM NO 1.

Courses &c. down Octorara

- S. 28. W. 40.
- S. 50 1/2 W. 24
- S. 60. W. 17.3
- S. 28. W. 4
- S. 54. E. 11
- S. 43. E. 30 = 126.3 perches

Courses &c. down the Run

- N. 25. W. 26.
- N. 38 1/4 W. 16.
- S. 87. W. 39.
- N. 86. W. 20
- S. 79. W. 20.
- S. 27 3/4 W. 20.
- S. 24 1/4 W. 8.
- S. 34 3/4 W. 20 = 169 perches.



The above draft represents a tract of land situate in Lower Oxford township Chester County Containing 95 ac 52 P & allowance of Six per Cent &c. Being a part of a tract of 188 1/4 ac of land which was Surveyed on the 17th Instant to John Cross on his warrant dated the 7th day of August A.D. 1738

Surveyed May 18th 1804.

by Ja. Hindman D.S.

To Samuel Cochran Esq. }
 Surveyor General. }

IN TESTIMONY that the above is a copy of the original remaining on file in the Department of Internal Affairs of Pennsylvania, made conformably to an Act of Assembly approved the 16th day of February, 1833, I have hereunto set my Hand and caused the Seal of said Department to be affixed at Harrisburg, this ninth day of December 1907.

Henry Howell
 Secretary of Internal Affairs.